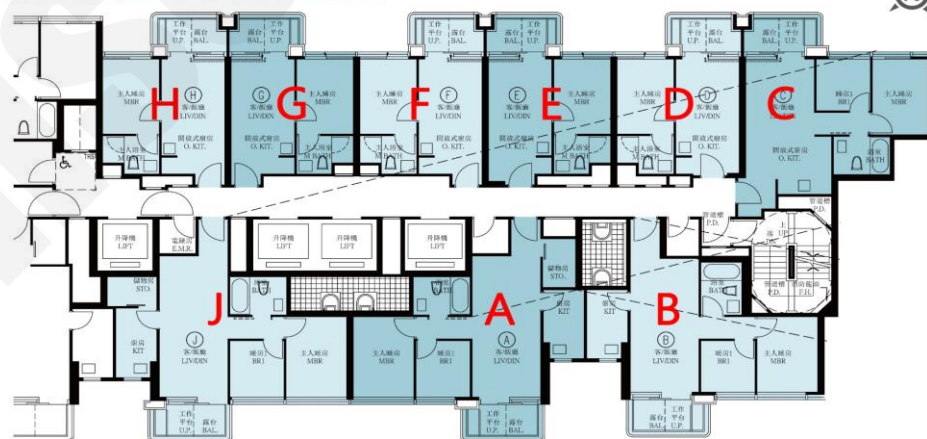


第2A座 Tower 2A



2A座A : 2房 560'		
樓層	訂價	折實價12%
2	\$16,856,000 @\$30,100	\$14,833,280 @\$26,488
3	\$17,107,000 @\$30,548	\$15,054,160 @\$26,882
5	\$17,368,000 @\$31,014	\$15,283,840 @\$27,293
6	\$17,544,000 @\$31,329	\$15,438,720 @\$27,569
7	\$17,721,000 @\$31,645	\$15,594,480 @\$27,847
8	\$17,990,000 @\$32,125	\$15,831,200 @\$28,270
9	\$18,081,000 @\$32,288	\$15,911,280 @\$28,413
10	\$18,172,000 @\$32,450	\$15,991,360 @\$28,556
11	\$18,263,000 @\$32,613	\$16,071,440 @\$28,699
12	\$18,355,000 @\$32,777	\$16,152,400 @\$28,844
15	\$18,447,000 @\$32,941	\$16,233,360 @\$28,988
16	\$18,539,000 @\$33,105	\$16,314,320 @\$29,133
18	\$18,821,000 @\$33,609	\$16,562,480 @\$29,576
19	\$18,915,000 @\$33,777	\$16,645,200 @\$29,724
20	\$19,011,000 @\$33,948	\$16,729,680 @\$29,874
21	\$19,106,000 @\$34,118	\$16,813,280 @\$30,024
22	\$19,202,000 @\$34,289	\$16,897,760 @\$30,175
23	\$19,297,000 @\$34,459	\$16,981,360 @\$30,324
25	\$19,394,000 @\$34,632	\$17,066,720 @\$30,476
26	\$19,490,000 @\$34,804	\$17,151,200 @\$30,627
27	\$19,588,000 @\$34,979	\$17,237,440 @\$30,781

2A座B : 2房 516'		
樓層	訂價	折實價12%
2	\$15,145,000 @\$29,351	\$13,327,600 @\$25,829
3	\$15,363,000 @\$29,773	\$13,519,440 @\$26,200
5	\$15,597,000 @\$30,227	\$13,725,360 @\$26,600
6	\$15,755,000 @\$30,533	\$13,864,400 @\$26,869
7	\$15,914,000 @\$30,841	\$14,004,320 @\$27,140
8	\$16,156,000 @\$31,310	\$14,217,280 @\$27,553
9	\$16,238,000 @\$31,469	\$14,289,440 @\$27,693
10	\$16,319,000 @\$31,626	\$14,360,720 @\$27,831
11	\$16,400,000 @\$31,783	\$14,432,000 @\$27,969
12	\$16,483,000 @\$31,944	\$14,505,040 @\$28,111
15	\$16,566,000 @\$32,105	\$14,578,080 @\$28,252
16	\$16,649,000 @\$32,266	\$14,651,120 @\$28,394
18	\$16,903,000 @\$32,758	\$14,874,640 @\$28,827
19	\$16,987,000 @\$32,921	\$14,948,560 @\$28,970
20	\$17,072,000 @\$33,085	\$15,023,360 @\$29,115
21	\$17,157,000 @\$33,250	\$15,098,160 @\$29,260
22	\$17,244,000 @\$33,419	\$15,174,720 @\$29,408
23	\$17,330,000 @\$33,585	\$15,250,400 @\$29,555
25	\$17,416,000 @\$33,752	\$15,326,080 @\$29,702
26	\$17,504,000 @\$33,922	\$15,403,520 @\$29,852

紅色為最高售價、最高平均呎價；藍色為最低售價、最低平均呎價

第2B座 Tower 2B



2B座A: 3房 639'/669'		
樓層	訂價	折實價12%
2	\$20,011,000 @ \$31,316	\$17,609,680 @ \$27,558
3	\$20,315,000 @ \$31,792	\$17,877,200 @ \$27,977
5	\$21,612,000 @ \$32,305	\$19,018,560 @ \$28,428
6	\$21,811,000 @ \$32,602	\$19,193,680 @ \$28,690
7	\$22,031,000 @ \$32,931	\$19,387,280 @ \$28,979
8	\$22,366,000 @ \$33,432	\$19,682,080 @ \$29,420
9	\$22,479,000 @ \$33,601	\$19,781,520 @ \$29,569
10	\$22,593,000 @ \$33,771	\$19,881,840 @ \$29,719
11	\$22,706,000 @ \$33,940	\$19,981,280 @ \$29,867
12	\$22,820,000 @ \$34,111	\$20,081,600 @ \$30,017
15	\$22,935,000 @ \$34,283	\$20,182,800 @ \$30,169
16	\$23,049,000 @ \$34,453	\$20,283,120 @ \$30,319
18	\$23,399,000 @ \$34,976	\$20,591,120 @ \$30,779
19	\$23,518,000 @ \$35,154	\$20,695,840 @ \$30,935
20	\$23,636,000 @ \$35,330	\$20,799,680 @ \$31,091
21	\$23,754,000 @ \$35,507	\$20,903,520 @ \$31,246
22	\$23,872,000 @ \$35,683	\$21,007,360 @ \$31,401
23	\$23,991,000 @ \$35,861	\$21,112,080 @ \$31,558
25	\$24,112,000 @ \$36,042	\$21,218,560 @ \$31,717
26	\$24,232,000 @ \$36,221	\$21,324,160 @ \$31,875
27	\$24,353,000 @ \$36,402	\$21,430,640 @ \$32,034
28	\$24,597,000 @ \$36,767	\$21,645,360 @ \$32,355

2B座B: 2房 579'		
樓層	訂價	折實價12%
5	\$18,333,000 @ \$31,663	\$16,133,040 @ \$27,864
6	\$18,519,000 @ \$31,984	\$16,296,720 @ \$28,146
7	\$18,705,000 @ \$32,306	\$16,460,400 @ \$28,429
8	\$18,990,000 @ \$32,798	\$16,711,200 @ \$28,862
9	\$19,086,000 @ \$32,964	\$16,795,680 @ \$29,008
10	\$19,181,000 @ \$33,128	\$16,879,280 @ \$29,152
11	\$19,278,000 @ \$33,295	\$16,964,640 @ \$29,300
12	\$19,375,000 @ \$33,463	\$17,050,000 @ \$29,447
15	\$19,472,000 @ \$33,630	\$17,135,360 @ \$29,595
16	\$19,570,000 @ \$33,800	\$17,221,600 @ \$29,744
18	\$19,868,000 @ \$34,314	\$17,483,840 @ \$30,197
19	\$19,968,000 @ \$34,487	\$17,571,840 @ \$30,349
20	\$20,068,000 @ \$34,660	\$17,659,840 @ \$30,501
21	\$20,168,000 @ \$34,832	\$17,747,840 @ \$30,653
22	\$20,269,000 @ \$35,007	\$17,836,720 @ \$30,806
23	\$20,370,000 @ \$35,181	\$17,925,600 @ \$30,960
25	\$20,472,000 @ \$35,358	\$18,015,360 @ \$31,115
26	\$20,574,000 @ \$35,534	\$18,105,120 @ \$31,270
27	\$20,677,000 @ \$35,712	\$18,195,760 @ \$31,426
28	\$20,883,000 @ \$36,067	\$18,377,040 @ \$31,739

2B座C: 3房 569'		
樓層	訂價	折實價12%
5	\$18,375,000 @ \$32,293	\$16,170,000 @ \$28,418
6	\$18,550,000 @ \$32,601	\$16,324,000 @ \$28,689
7	\$18,738,000 @ \$32,931	\$16,489,440 @ \$28,980
8	\$19,023,000 @ \$33,432	\$16,740,240 @ \$29,420
9	\$19,119,000 @ \$33,601	\$16,824,720 @ \$29,569
10	\$19,215,000 @ \$33,770	\$16,909,200 @ \$29,717
11	\$19,312,000 @ \$33,940	\$16,994,560 @ \$29,867
12	\$19,408,000 @ \$34,109	\$17,079,040 @ \$30,016
15	\$19,506,000 @ \$34,281	\$17,165,280 @ \$30,167
16	\$19,604,000 @ \$34,453	\$17,251,520 @ \$30,319
18	\$19,902,000 @ \$34,977	\$17,513,760 @ \$30,780
19	\$20,002,000 @ \$35,153	\$17,601,760 @ \$30,935
20	\$20,103,000 @ \$35,330	\$17,690,640 @ \$31,091
21	\$20,203,000 @ \$35,506	\$17,778,640 @ \$31,245
22	\$20,304,000 @ \$35,684	\$17,867,520 @ \$31,402
23	\$20,405,000 @ \$35,861	\$17,956,400 @ \$31,558
25	\$20,507,000 @ \$36,040	\$18,046,160 @ \$31,716
26	\$20,610,000 @ \$36,221	\$18,136,800 @ \$31,875
27	\$20,713,000 @ \$36,402	\$18,227,440 @ \$32,034
28	\$20,920,000 @ \$36,766	\$18,409,600 @ \$32,354

紅色為最高售價、最高平均呎價；藍色為最低售價、最低平均呎價