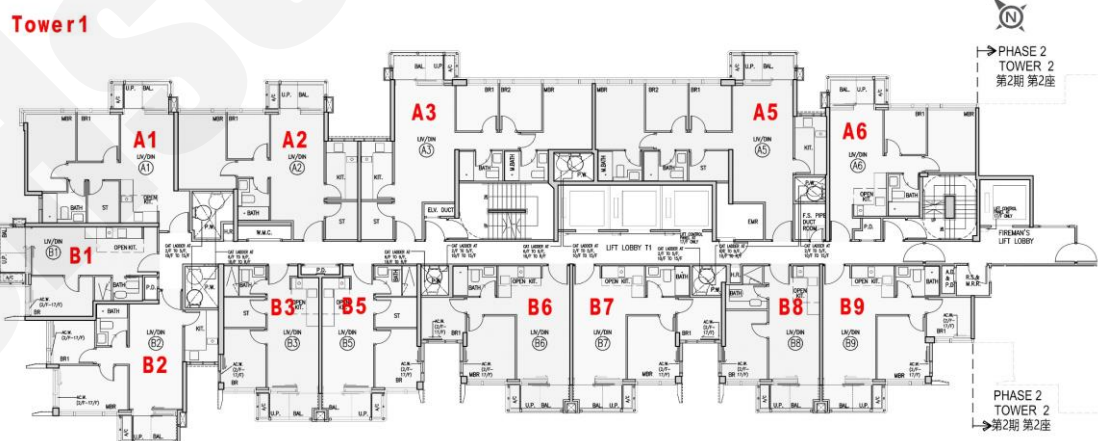


1座B2: 2房 500'		
樓層	訂價	折實價16%
1	\$8,286,000 @\$16,572	\$6,960,240 @\$13,920
2	\$8,336,000 @\$16,672	\$7,002,240 @\$14,004
3	\$8,461,000 @\$16,922	\$7,107,240 @\$14,214
5	\$8,478,000 @\$16,956	\$7,121,520 @\$14,243
6	\$8,495,000 @\$16,990	\$7,135,800 @\$14,272
7	\$8,495,000 @\$16,990	\$7,135,800 @\$14,272
8	\$8,512,000 @\$17,024	\$7,150,080 @\$14,300
9	\$8,529,000 @\$17,058	\$7,164,360 @\$14,329
10	\$8,546,000 @\$17,092	\$7,178,640 @\$14,357



1座B6: 2房 464'		
樓層	訂價	折實價16%
1	\$6,977,000 @\$15.037	\$5,860,680 @\$12.631
2	\$7,018,000 @\$15.125	\$5,895,120 @\$12.705
3	\$7,123,000 @\$15.351	\$5,983,320 @\$12.895
5	\$7,137,000 @\$15.381	\$5,995,080 @\$12.920
6	\$7,152,000 @\$15.414	\$6,007,680 @\$12.948
7	\$7,152,000 @\$15.414	\$6,007,680 @\$12.948
8	\$7,166,000 @\$15.444	\$6,019,440 @\$12.973
9	\$7,180,000 @\$15.474	\$6,031,200 @\$12.998
10	\$7,195,000 @\$15.506	\$6,043,800 @\$13.025

1座B7：2房 462'		
樓層	訂價	折實價16%
1	\$6,946,000 @\$15.035	\$5,834,640 @\$12.629
2	\$6,987,000 @\$15.123	\$5,869,080 @\$12.704
3	\$7,092,000 @\$15.351	\$5,957,280 @\$12.895
5	\$7,106,000 @\$15.381	\$5,969,040 @\$12.920
6	\$7,121,000 @\$15.413	\$5,981,640 @\$12.947
7	\$7,121,000 @\$15.413	\$5,981,640 @\$12.947
8	\$7,135,000 @\$15.444	\$5,993,400 @\$12.973
9	\$7,149,000 @\$15.474	\$6,005,160 @\$12.998
10	\$7,164,000 @\$15.506	\$6,017,760 @\$13.025

1座B8: 1房 354'		
樓層	訂價	折實價16%
1	\$5,555,000 @\$15.692	\$4,666,200 @\$13.181
2	\$5,589,000 @\$15.788	\$4,694,760 @\$13.262
3	\$5,672,000 @\$16.023	\$4,764,480 @\$13.459
5	\$5,684,000 @\$16.056	\$4,774,560 @\$13.487
6	\$5,696,000 @\$16.090	\$4,784,640 @\$13.516
7	\$5,696,000 @\$16.090	\$4,784,640 @\$13.516
8	\$5,706,000 @\$16.119	\$4,793,040 @\$13.540
9	\$5,718,000 @\$16.153	\$4,803,120 @\$13.568
10	\$5,729,000 @\$16.184	\$4,812,360 @\$13.594

1座B9: 2房 461'		
樓層	訂價	折實價16%
1	\$6,971,000	\$5,855,640
	@\$15,121	@\$12,702
2	\$7,012,000	\$5,890,080
	@\$15,210	@\$12,777
3	\$7,117,000	\$5,978,280
	@\$15,438	@\$12,968
5	\$7,131,000	\$5,990,040
	@\$15,469	@\$12,994
6	\$7,146,000	\$6,002,640
	@\$15,501	@\$13,021
7	\$7,146,000	\$6,002,640
	@\$15,501	@\$13,021
8	\$7,160,000	\$6,014,400
	@\$15,531	@\$13,048
9	\$7,174,000	\$6,026,160
	@\$15,562	@\$13,072
10	\$7,189,000	\$6,038,760
	@\$15,594	@\$13,095

紅色為最高售價、最高平均呎價；藍色為最低售價、最低平均呎價

2座A2：2房 485'		
樓層	訂價	折實價16%
1	\$8,335,000 @\$17,186	\$7,001,400 @\$14,436
2	\$8,347,000 @\$17,210	\$7,011,480 @\$14,457
3	\$8,360,000 @\$17,237	\$7,022,400 @\$14,479
9	\$8,435,000 @\$17,392	\$7,085,400 @\$14,609
10	\$8,448,000 @\$17,419	\$7,096,320 @\$14,632
11	\$8,460,000 @\$17,443	\$7,106,400 @\$14,652
12	\$8,473,000 @\$17,470	\$7,117,320 @\$14,675
16	\$8,511,000 @\$17,548	\$7,149,240 @\$14,741
17	\$8,524,000 @\$17,575	\$7,160,160 @\$14,763



2座B6：1房 462'		
樓層	訂價	折實價16%
1	\$7,045,000 @\$15,249	\$5,917,800 @\$12,809
2	\$7,087,000 @\$15,340	\$5,953,080 @\$12,885
3	\$7,193,000 @\$15,569	\$6,042,120 @\$13,078
5	\$7,208,000 @\$15,602	\$6,054,720 @\$13,105
6	\$7,222,000 @\$15,632	\$6,066,480 @\$13,131
7	\$7,222,000 @\$15,632	\$6,066,480 @\$13,131
8	\$7,236,000 @\$15,662	\$6,078,240 @\$13,156
9	\$7,252,000 @\$15,697	\$6,091,680 @\$13,185
10	\$7,266,000 @\$15,727	\$6,103,440 @\$13,211

2座B7：1房 355'		
樓層	訂價	折實價16%
1	\$5,616,000 @\$15,820	\$4,717,440 @\$13,289
2	\$5,650,000 @\$15,915	\$4,746,000 @\$13,369
3	\$5,735,000 @\$16,155	\$4,817,400 @\$13,570
5	\$5,747,000 @\$16,189	\$4,827,480 @\$13,599
6	\$5,758,000 @\$16,220	\$4,836,720 @\$13,625
7	\$5,758,000 @\$16,220	\$4,836,720 @\$13,625
8	\$5,770,000 @\$16,254	\$4,846,800 @\$13,653
9	\$5,781,000 @\$16,285	\$4,856,040 @\$13,679
10	\$5,792,000 @\$16,315	\$4,865,280 @\$13,705

紅色為最高售價、最高平均呎價；藍色為最低售價、最低平均呎價

3座B5 : 1房 358'		
樓層	訂價	折實價16%
1	\$5,970,000 @\$16,676	\$5,014,800 @\$14,008
2	\$6,005,000 @\$16,774	\$5,044,200 @\$14,090
3	\$6,096,000 @\$17,028	\$5,120,640 @\$14,303
5	\$6,108,000 @\$17,061	\$5,130,720 @\$14,332
6	\$6,120,000 @\$17,095	\$5,140,800 @\$14,360
7	\$6,120,000 @\$17,095	\$5,140,800 @\$14,360
8	\$6,133,000 @\$17,131	\$5,151,720 @\$14,390
9	\$6,145,000 @\$17,165	\$5,161,800 @\$14,418
10	\$6,156,000 @\$17,196	\$5,171,040 @\$14,444

Tower3

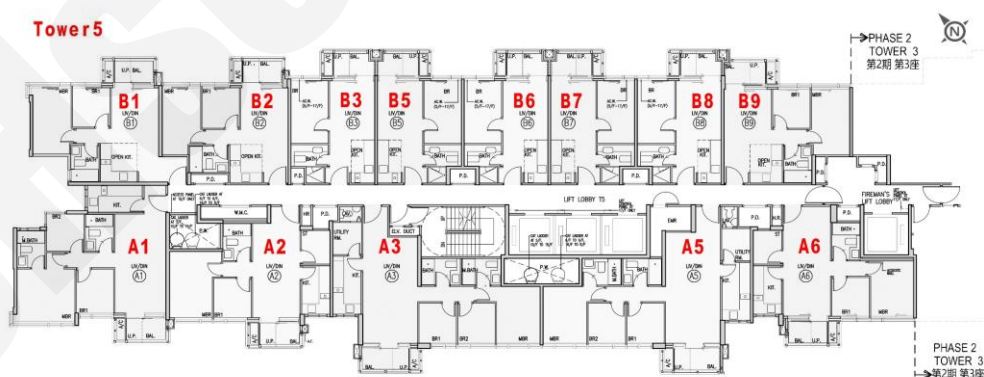


3座B6 : 1房 357'		
樓層	訂價	折實價16%
1	\$5,937,000 @\$16,630	\$4,987,080 @\$13,969
2	\$5,973,000 @\$16,731	\$5,017,320 @\$14,054
3	\$6,064,000 @\$16,986	\$5,093,760 @\$14,268
5	\$6,075,000 @\$17,017	\$5,103,000 @\$14,294
6	\$6,087,000 @\$17,050	\$5,113,080 @\$14,322
7	\$6,087,000 @\$17,050	\$5,113,080 @\$14,322
8	\$6,099,000 @\$17,084	\$5,123,160 @\$14,351
9	\$6,111,000 @\$17,118	\$5,133,240 @\$14,379
10	\$6,124,000 @\$17,154	\$5,144,160 @\$14,409

3座B8 : 2房 445'		
樓層	訂價	折實價16%
5	\$7,409,000 @\$16,649	\$6,223,560 @\$13,986
6	\$7,424,000 @\$16,683	\$6,236,160 @\$14,014
7	\$7,424,000 @\$16,683	\$6,236,160 @\$14,014
8	\$7,439,000 @\$16,717	\$6,248,760 @\$14,042
9	\$7,454,000 @\$16,751	\$6,261,360 @\$14,070
10	\$7,468,000 @\$16,782	\$6,273,120 @\$14,097

紅色為最高售價、最高平均呎價；藍色為最低售價、最低平均呎價

5座A2: 2房 561'		
樓層	訂價	折實價16%
1	\$10,541,000 @\$18,790	\$8,854,440 @\$15,783
2	\$10,558,000 @\$18,820	\$8,868,720 @\$15,809
3	\$10,573,000 @\$18,847	\$8,881,320 @\$15,831
9	\$10,668,000 @\$19,016	\$8,961,120 @\$15,973
10	\$10,685,000 @\$19,046	\$8,975,400 @\$15,999
11	\$10,700,000 @\$19,073	\$8,988,000 @\$16,021
12	\$10,717,000 @\$19,103	\$9,002,280 @\$16,047
16	\$10,765,000 @\$19,189	\$9,042,600 @\$16,119
17	\$10,781,000 @\$19,217	\$9,056,040 @\$16,143



5座B2: 2房 446'		
樓層	訂價	折實價16%
1	\$7,124,000 @\$15,973	\$5,984,160 @\$13,417
2	\$7,167,000 @\$16,070	\$6,020,280 @\$13,498
3	\$7,275,000 @\$16,312	\$6,111,000 @\$13,702
5	\$7,290,000 @\$16,345	\$6,123,600 @\$13,730
6	\$7,304,000 @\$16,377	\$6,135,360 @\$13,756
7	\$7,304,000 @\$16,377	\$6,135,360 @\$13,756
8	\$7,318,000 @\$16,408	\$6,147,120 @\$13,783
9	\$7,334,000 @\$16,444	\$6,160,560 @\$13,813
10	\$7,348,000 @\$16,475	\$6,172,320 @\$13,839

5座B6: 1房 353'		
樓層	訂價	折實價16%
1	\$5,793,000 @\$16,411	\$4,866,120 @\$13,785
2	\$5,828,000 @\$16,510	\$4,895,520 @\$13,868
3	\$5,915,000 @\$16,756	\$4,968,600 @\$14,075
5	\$5,927,000 @\$16,790	\$4,978,680 @\$14,104
6	\$5,939,000 @\$16,824	\$4,988,760 @\$14,132
7	\$5,939,000 @\$16,824	\$4,988,760 @\$14,132
8	\$5,950,000 @\$16,856	\$4,998,000 @\$14,159
9	\$5,962,000 @\$16,890	\$5,008,080 @\$14,187
10	\$5,974,000 @\$16,924	\$5,018,160 @\$14,216

5座B7: 1房 352'		
樓層	訂價	折實價16%
1	\$5,792,000 @\$16,455	\$4,865,280 @\$13,822
2	\$5,827,000 @\$16,554	\$4,894,680 @\$13,905
3	\$5,914,000 @\$16,801	\$4,967,760 @\$14,113
5	\$5,925,000 @\$16,832	\$4,977,000 @\$14,139
6	\$5,937,000 @\$16,866	\$4,987,080 @\$14,168
7	\$5,937,000 @\$16,866	\$4,987,080 @\$14,168
8	\$5,949,000 @\$16,901	\$4,997,160 @\$14,196
9	\$5,961,000 @\$16,935	\$5,007,240 @\$14,225
10	\$5,973,000 @\$16,969	\$5,017,320 @\$14,254

5座B9: 2房 445'		
樓層	訂價	折實價16%
5	\$7,779,000 @\$17,481	\$6,534,360 @\$14,684
6	\$7,795,000 @\$17,517	\$6,547,800 @\$14,714
7	\$7,795,000 @\$17,517	\$6,547,800 @\$14,714
8	\$7,810,000 @\$17,551	\$6,560,400 @\$14,742
9	\$7,825,000 @\$17,584	\$6,573,000 @\$14,771
10	\$7,841,000 @\$17,620	\$6,586,440 @\$14,801

紅色為最高售價、最高平均呎價；藍色為最低售價、最低平均呎價